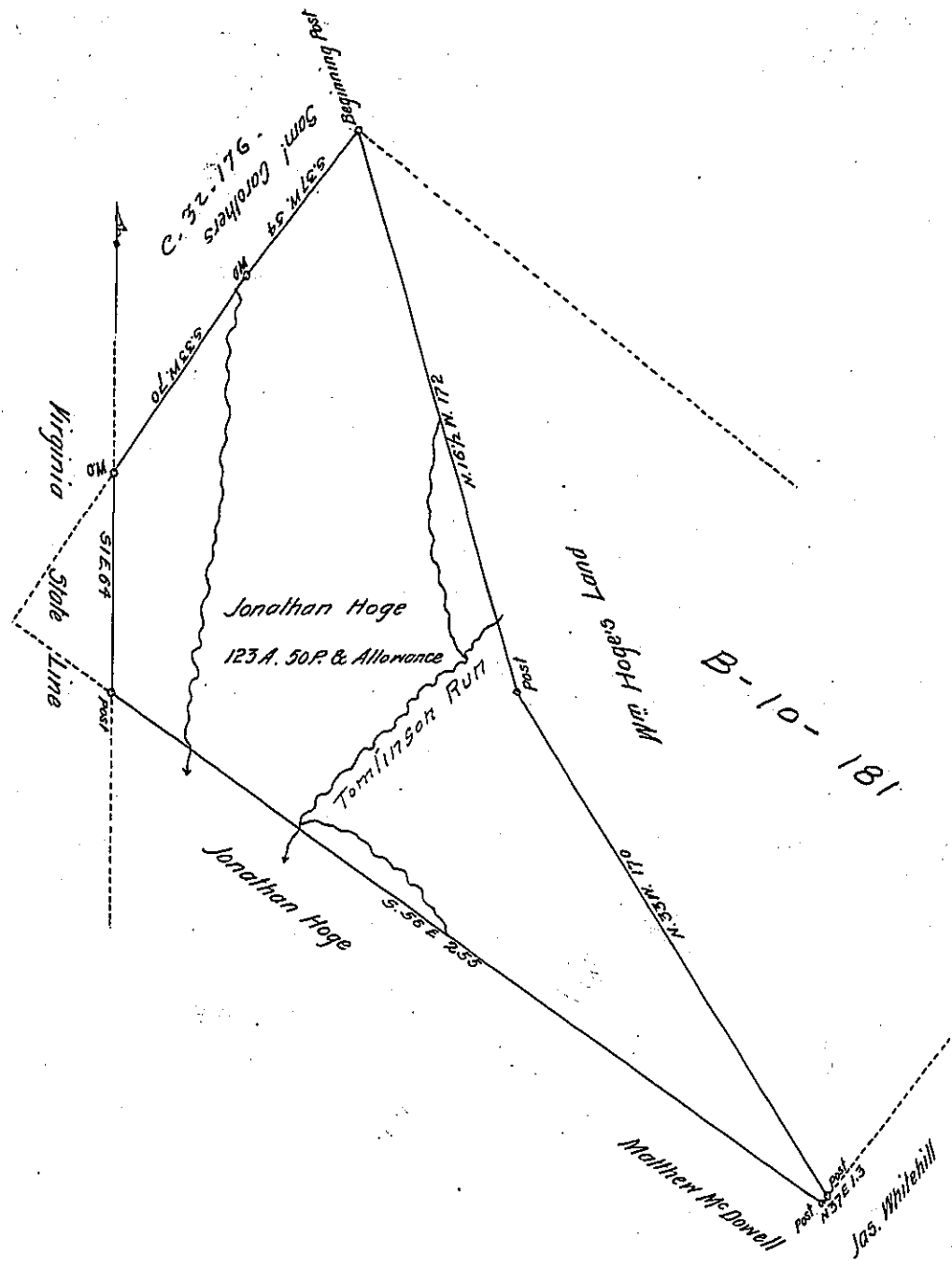


( see original C-66-146- )



The above Diagram Represents a quantity of Land situate on the ~~west~~ east branch of Tombleons run in Homer Township Beaver County Penna. Containing 123 A. 50 P. & Allowance. Being part of a large tract of Land which was formerly surveyed in pursuance of a warrant granted to Henry Ballows, which said tract of Land containing 300 & 3/4 A. became fully vested in John Hoge, who, by his last will & Testament bequeathed the said tract of Land unto his two sons Jonathan & Milliss Hoge. The dotted lines represent the whole tract as surveyed to Henry Ballows, that portion represented on the west corner was struck off by the Virginia Line which was run the following year after the warrant was executed. The portion allotted to Jonathan Hoge is the west part of said tract formerly owned by the said John Hoge dec'd. The line of Division between the said Jonathan & M<sup>rs</sup> Hoge was run according to the will of John Hoge dec'd  
Dated 18<sup>th</sup> March 1840

To Jac Dallade Esq. D. C.

Warrant dated 25<sup>th</sup> Aug 1784

J. A. Veazey D. S.

IN TESTIMONY that the above is a copy of the original remaining on file in the Department of Internal Affairs of Pennsylvania, made conformably to an Act of Assembly approved the 16th day of February, 1833, I have hereunto set my Hand and caused the Seal of said Department to be affixed at Harrisburg, this  
nineteenth day of December 1905.

*Isaac R. [Signature]*  
Secretary of Internal Affairs.